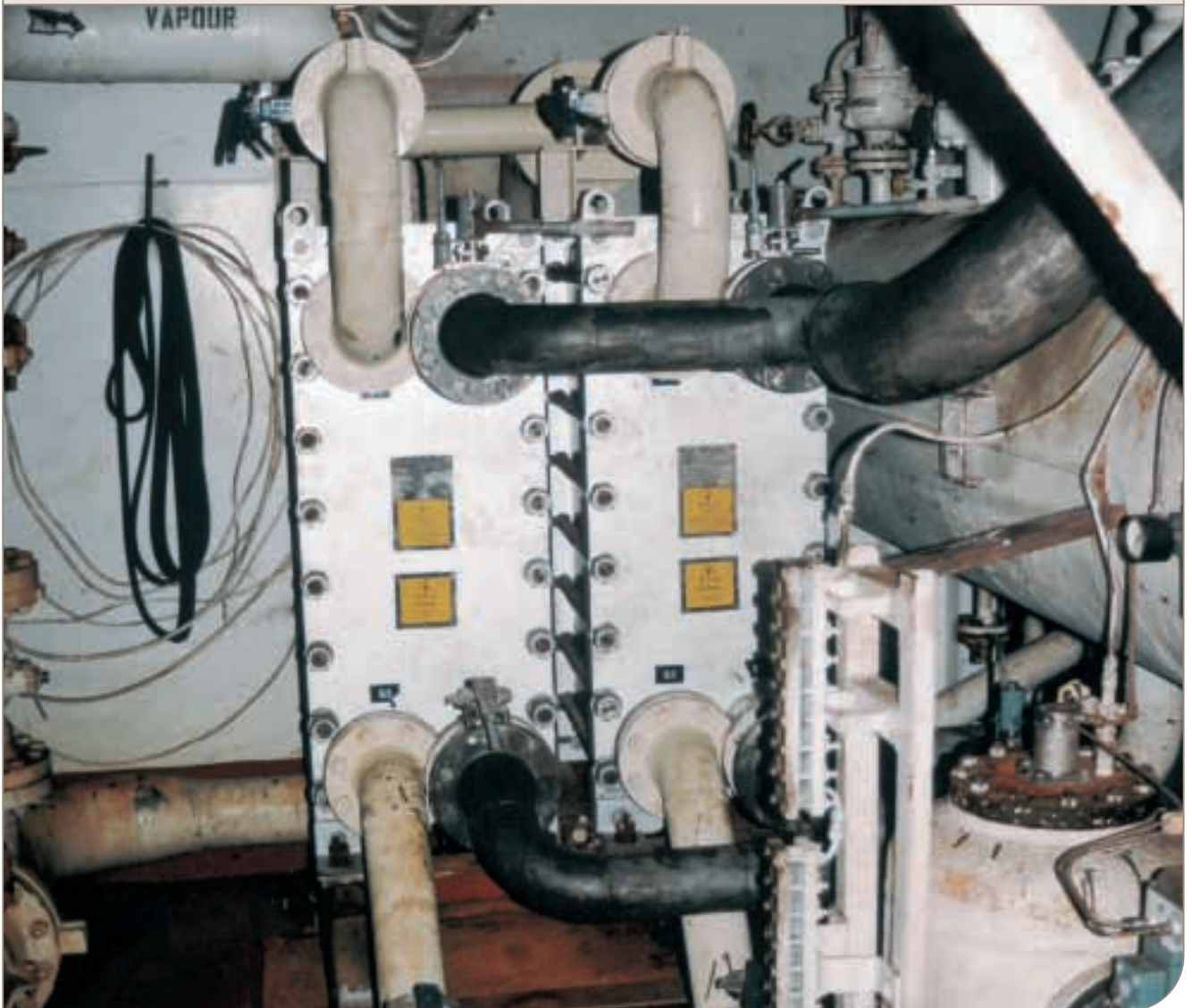




Rugged, efficient and trouble-free

AlfaRex All-Welded Plate Heat Exchanger



Annual savings of approx. 12,000 Euro (LPG cargo condenser upgrade). AlfaRex all-welded plate-type heat exchangers are efficient replacements for shell & tube units in applications involving aggressive media at high temperatures and pressures. Combining an ingenious design with laser welding, AlfaRex heat exchangers are tough and reliable and require very little maintenance.

Recognize these problems?

- **High operating costs for operators of chemical product tankers and gas carriers due to worn shell & tube heat exchangers.**

- > Corrosion problems, pitted tubes.
- > Pin-holes in tubes.
- > Plugging of tubes.
- > Leakage from heat exchangers.
- > Cross-contamination: media/fluids.
- > Poor performance.
- > Frequent costly maintenance required.
- > Frequent cleaning required; difficult to clean.

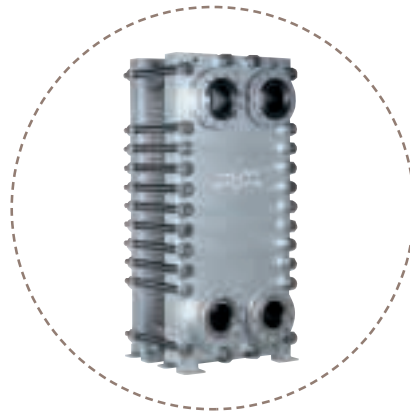
- **Frequent breakdowns resulting in unplanned maintenance and costly downtime.**

- > Worn-out shell & tube heat exchangers difficult and costly to retube; hole must be cut in deckhouse structure to retube.

Replace your shell & tube unit with an AlfaRex Plate Heat Exchanger

High performance and reliability.

- > Copes with liquids, gases and mixtures of liquids and gases.
- > Copes with temperatures from -50°C to +350°C, pressures up to 40 bar g.
- > Turbulent flow gives higher heat transfer capacity per area unit.
- > Low hold-up volume means fast response.



- > Faster cooling rate than shell & tube.
- > Gasket-free design eliminates risk of leakage.
- > Rugged design ensures long service lifetime.

Low-cost, trouble-free operation.

- > Titanium plates eliminate risk of corrosion.
- > Reduced maintenance due to less heat transfer area; lower maintenance and operating costs.
- > No scaling problems. Plate surface temperature is only 40°C, scaling does not occur below 45°C.
- > Virtually no cleaning required.
- > Easy to clean using Alfa Laval Cleaning in Place, CIP, unit (this can be permanently installed).

AlfaRex All-Welded Plate Heat Exchanger

- An efficient solution for:**
- **Dumping condensers**
 - **LPG cargo condensers**
 - **Other demanding heat exchange applications**

Low-cost, flexible installation.

- > Compact design; can be installed without cutting holes in deckhouse structure (existing shell & tube units can be cut up and removed, or left in place).
- > Occupies far less space than other exchangers for a given duty.
- > Light weight means lower transportation and handling costs.

The bottom line

Upgrading with AlfaRex will reduce your operating costs. Your local Alfa Laval representative will be pleased to show you how you can save money.

COST BENEFITS	Savings, Euro*
Reduction in energy cost	
Lower maintenance cost	
Less downtime	
Longer service lifetime	

* Fill in the boxes with your local Alfa Laval representative to calculate how much you can win by upgrading.

How to contact Alfa Laval

Contact details for all countries are continually updated on our website. Please visit www.alfalaval.com to access the information direct.